

# AT&T Mobility Roosevelt High School

District of Columbia Public Schools



**Advisory Neighborhood Commission – 4C05**  
**Wednesday, January 11<sup>th</sup>, 2012 at 6:30pm**



# Site Information

## Location

Address: 4301 13<sup>th</sup> Street NW Washington, D.C. 20011

## Owner

District of Columbia Public Schools

## AT&T's Proposed Facility

120' lightpole with 6' lightning rod (overall AGL of 126')

12 AT&T panel antennas mounted on 12' platform

Lights will be mounted at same height as original lightpole

25' x 33' equipment compound

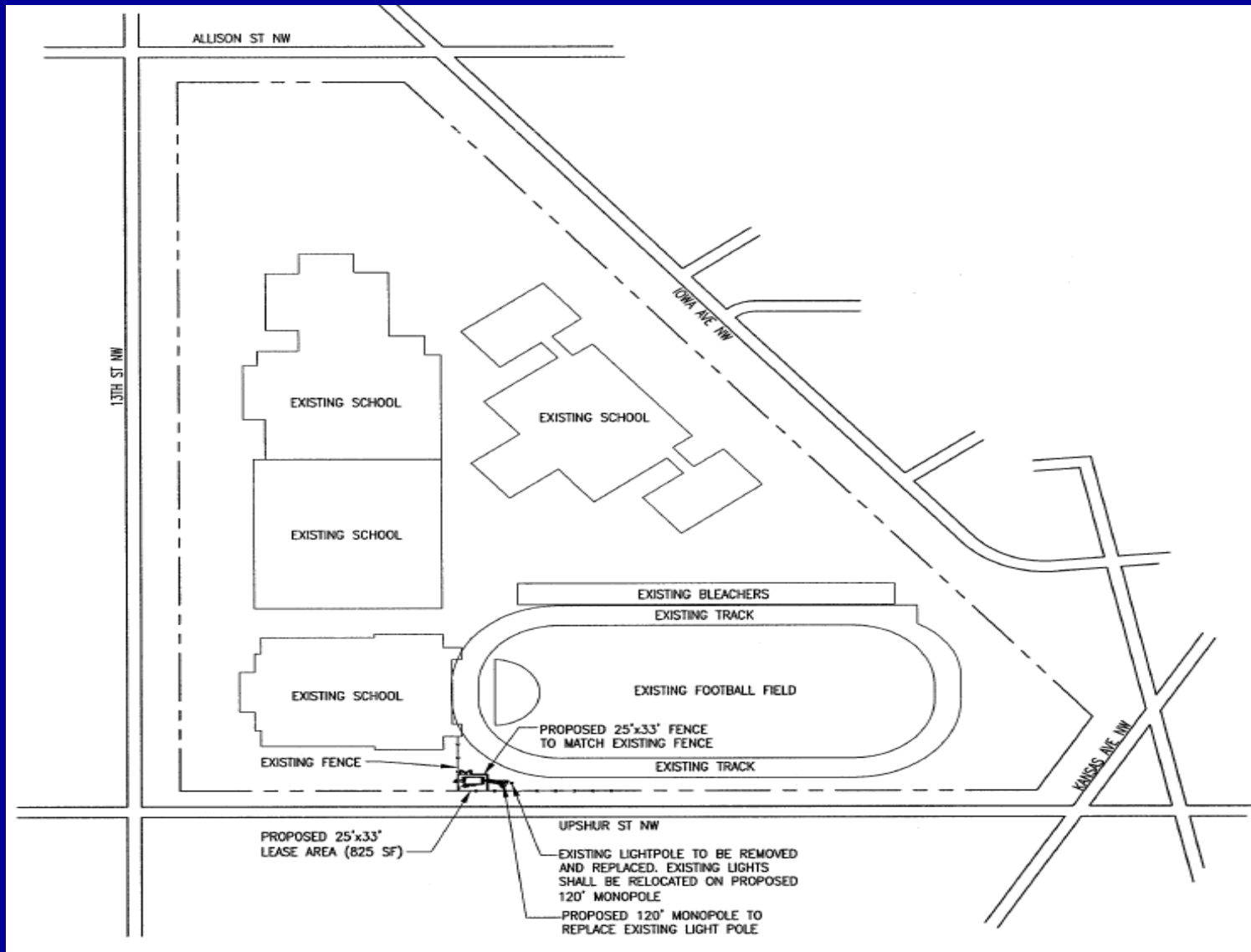
## Coverage Objective

The objective of this site is to provide in-building coverage and capacity in the commercial and residential areas of Petworth and Crestwood. This site will handle traffic from the commuters along Georgia Avenue, Kansas Avenue and Iowa Avenue. This site will also provide contiguous coverage between existing sites at Paramount and Grace Lutheran Church.



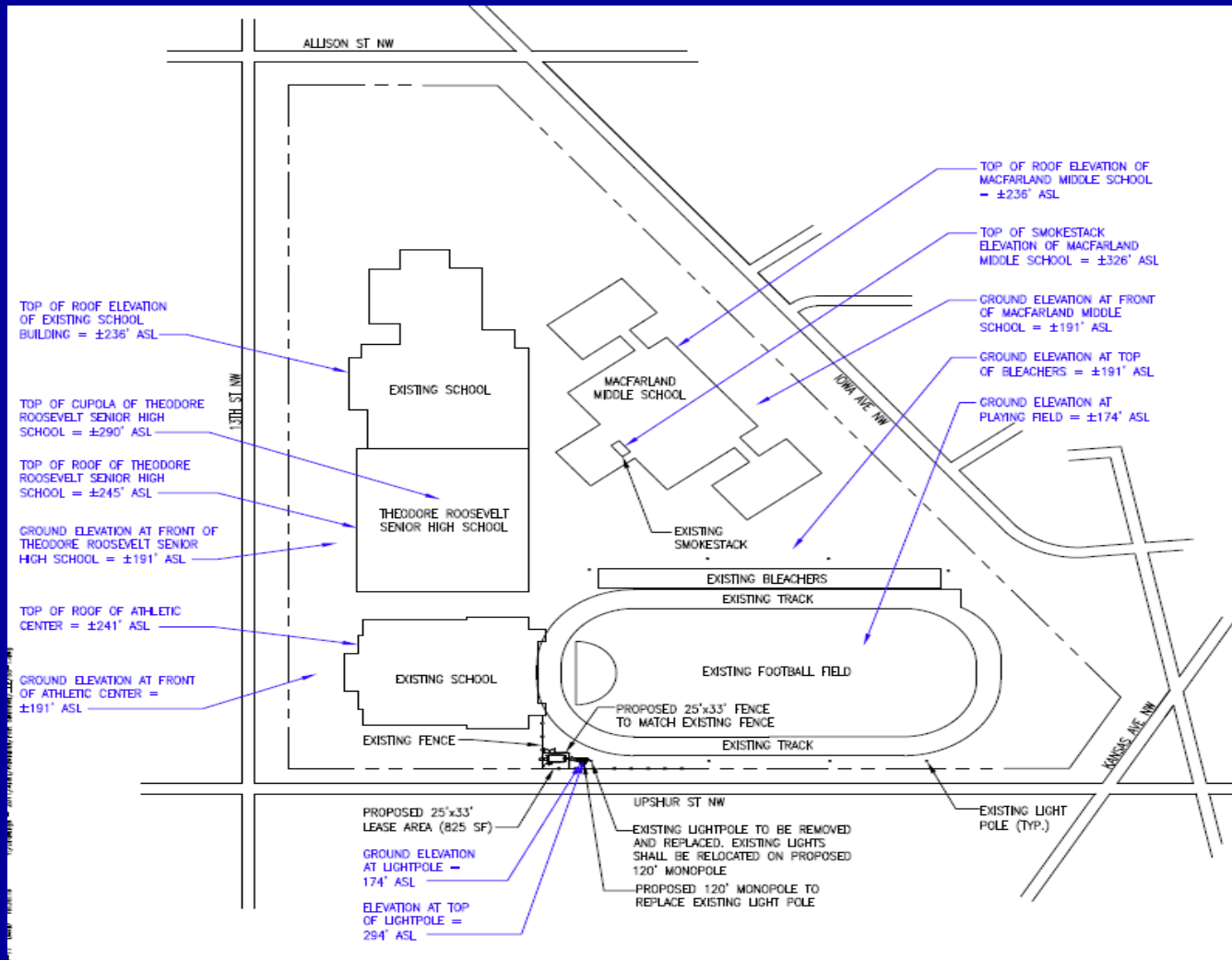
# Proposed Facility – Site Plan

## *Location on Parcel*

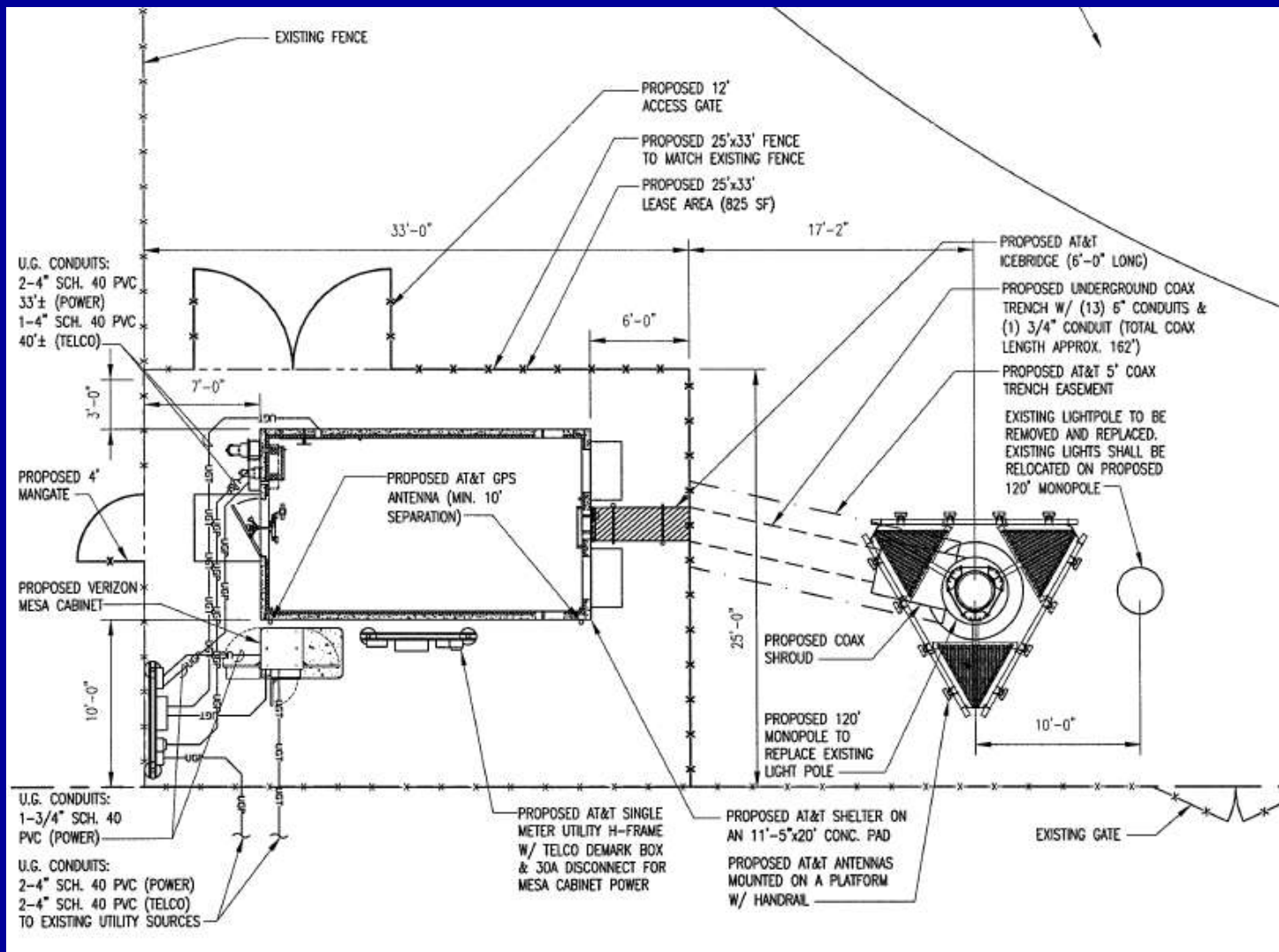


# Proposed Facility – Site Plan

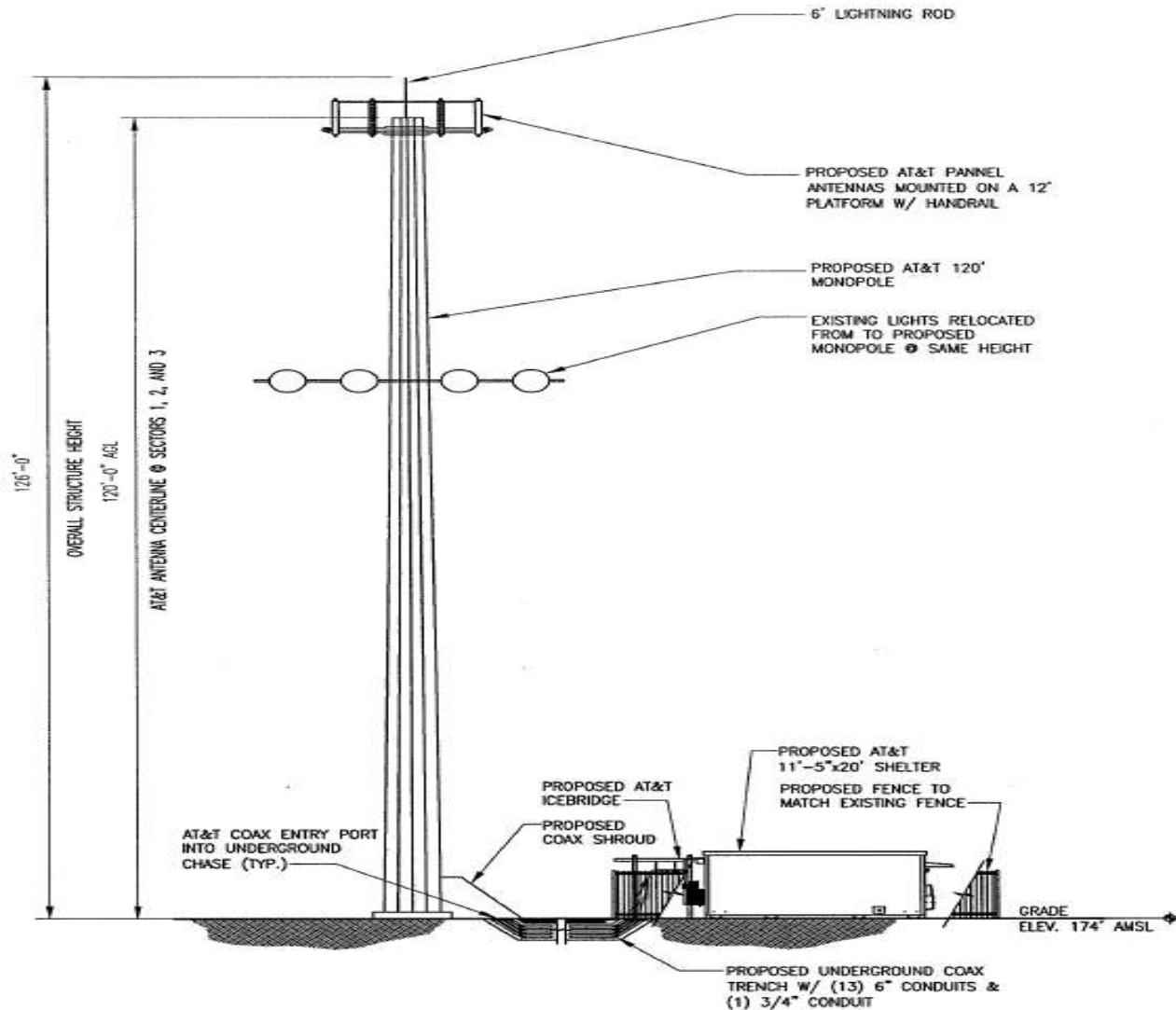
## *Location on Parcel with Elevations*



# Proposed Facility – Site Plan Equipment Compound



# Proposed Facility – Lightpole



# Example Replacement Lightpole at Robert E. Lee High School



# Existing Sites on DC School Property

- Garfield Elementary School
- Kimball Elementary School
- Burville Elementary School
- Shepherd Elementary School
- Malcolm X Elementary School
- John Burroughs Elementary School
- Langdon Elementary
- Lasalle Backus Elementary School
- Rudolph Elementary School
- Orr Elementary School
- MacFarland Middle School
- Kipp DC – College Preparatory
- Evans High School
- Archbishop Carroll High School
- Benjamin Banneker Senior High School
- Eastern Senior High school
- Duke Ellington School of the Arts
- Coolidge Senior High School
- H.D. Woodson Senior High School
- Dunbar High School
- Bennett Career Institute

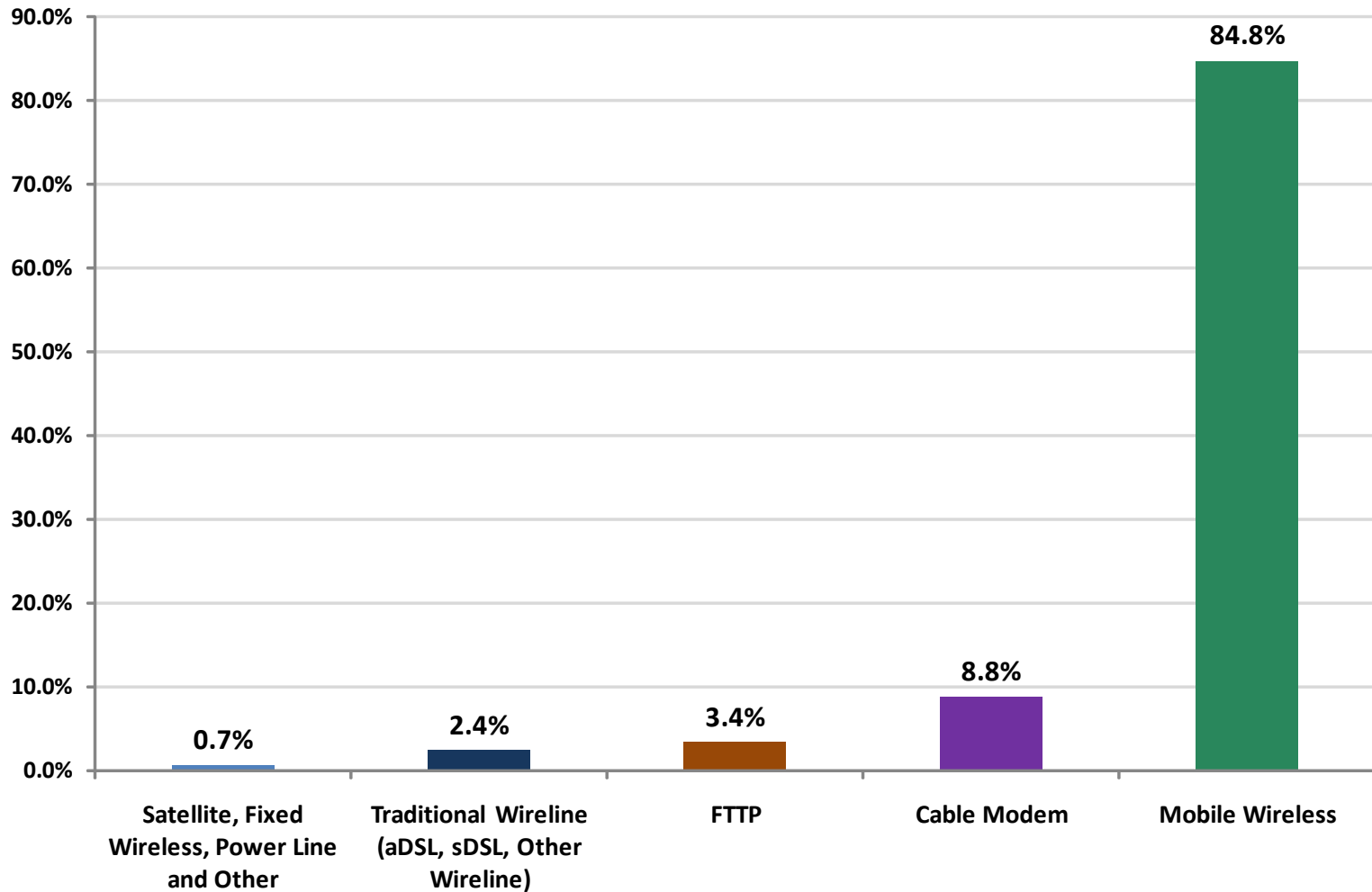


# Growing Demand Requires Increased Capacity

- This facility will improve all digital coverage, not only 3G & 4G.
- CTIA-The Wireless Association is the international association for the wireless telecommunications industry.



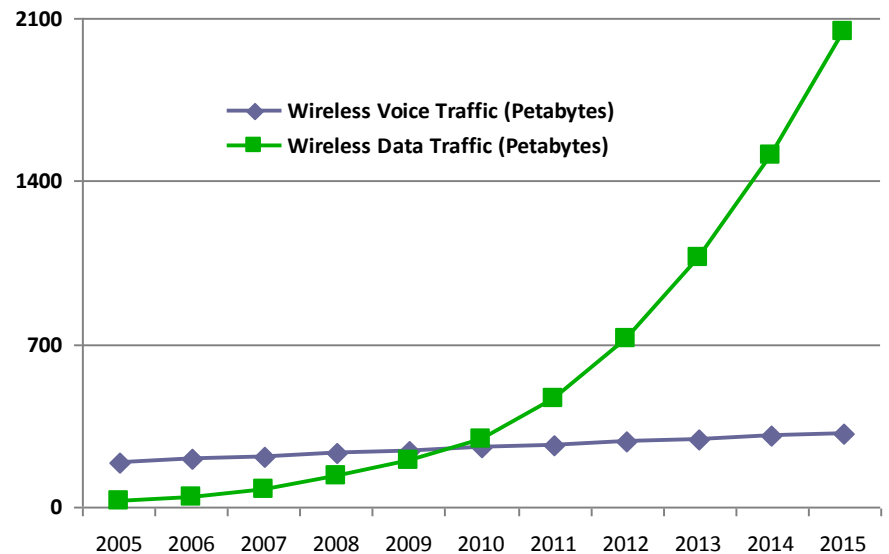
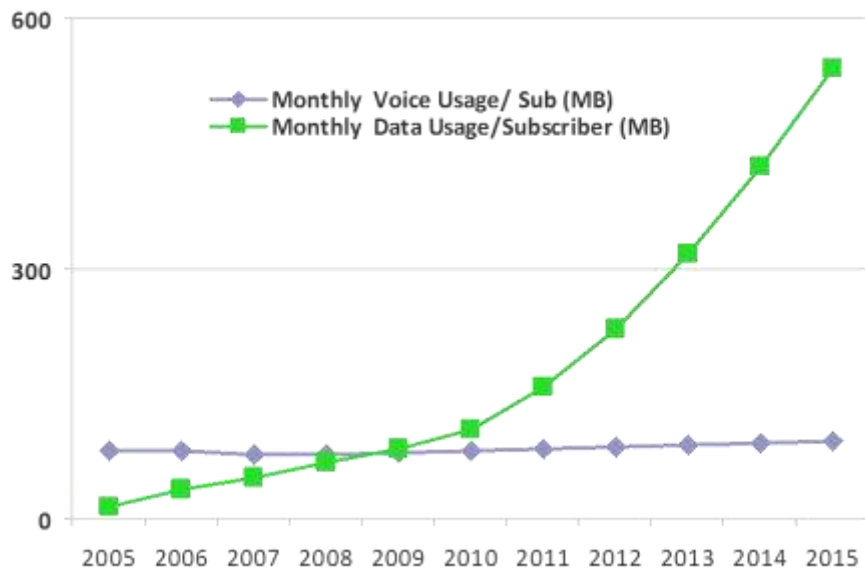
### High-Speed Adds Dec. 2008 - Dec. 2009, by Technology (Download Speeds of More than 200 kbps)



# Consumer experience is changing - Industry forecasts show exponential growth in data usage, while voice stabilizes.

Consumers are increasingly switching to smartphones and emerging devices that require ubiquitous access to high speed wireless networks

Internal AT&T data shows that internet traffic already represent vast majority of network traffic

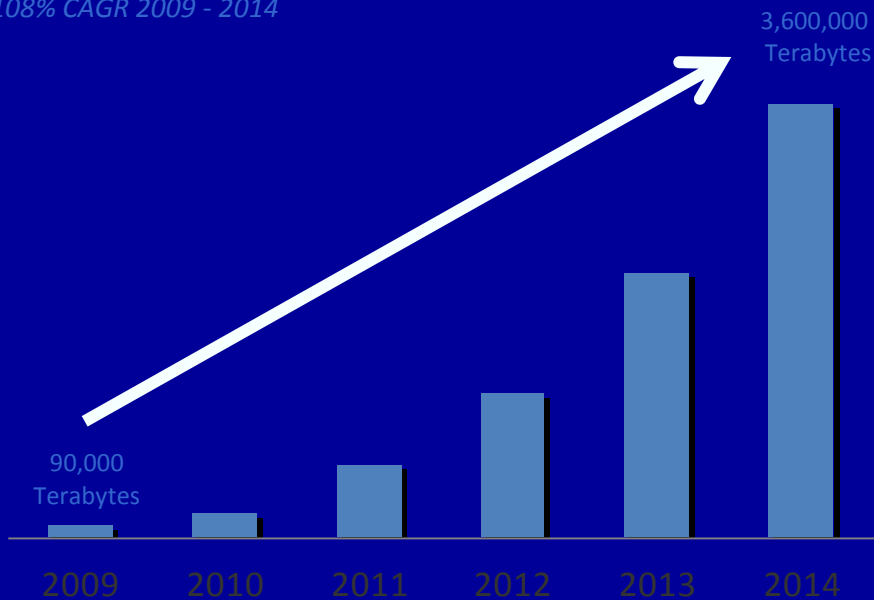


# Customer Demand Surging

## Cisco Forecasts 3.6 Million Terabytes per Month of Global Mobile Data Traffic by 2014

(TB per Month)

108% CAGR 2009 - 2014



Mobile broadband growth outpaces every other platform\*\*

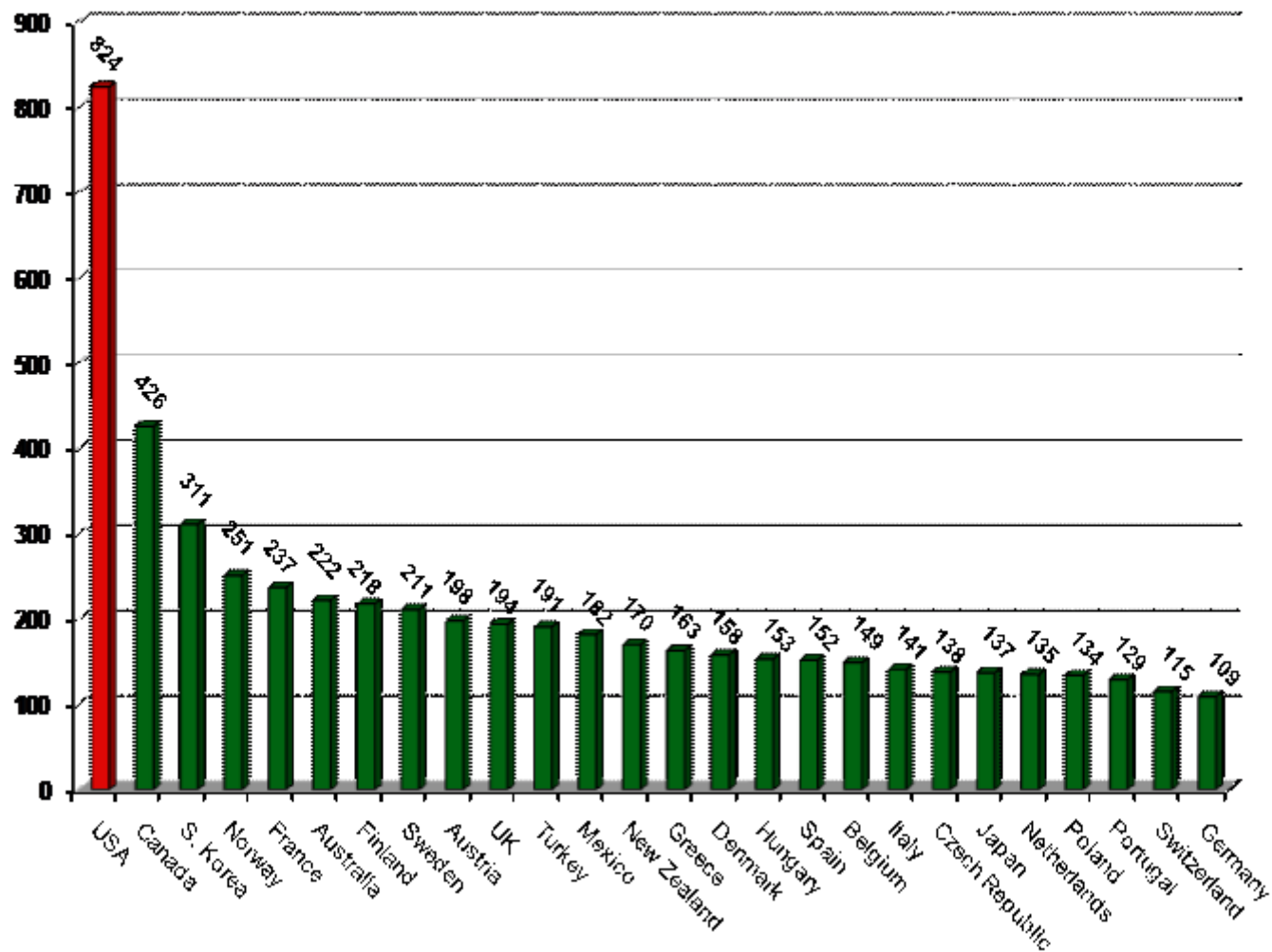
Pew estimates that by 2020, mobile devices will be the primary Internet devices for most people in the world\*\*\*

The average smartphone user generates 10 times the amount of traffic generated by the average non-smartphone user\*

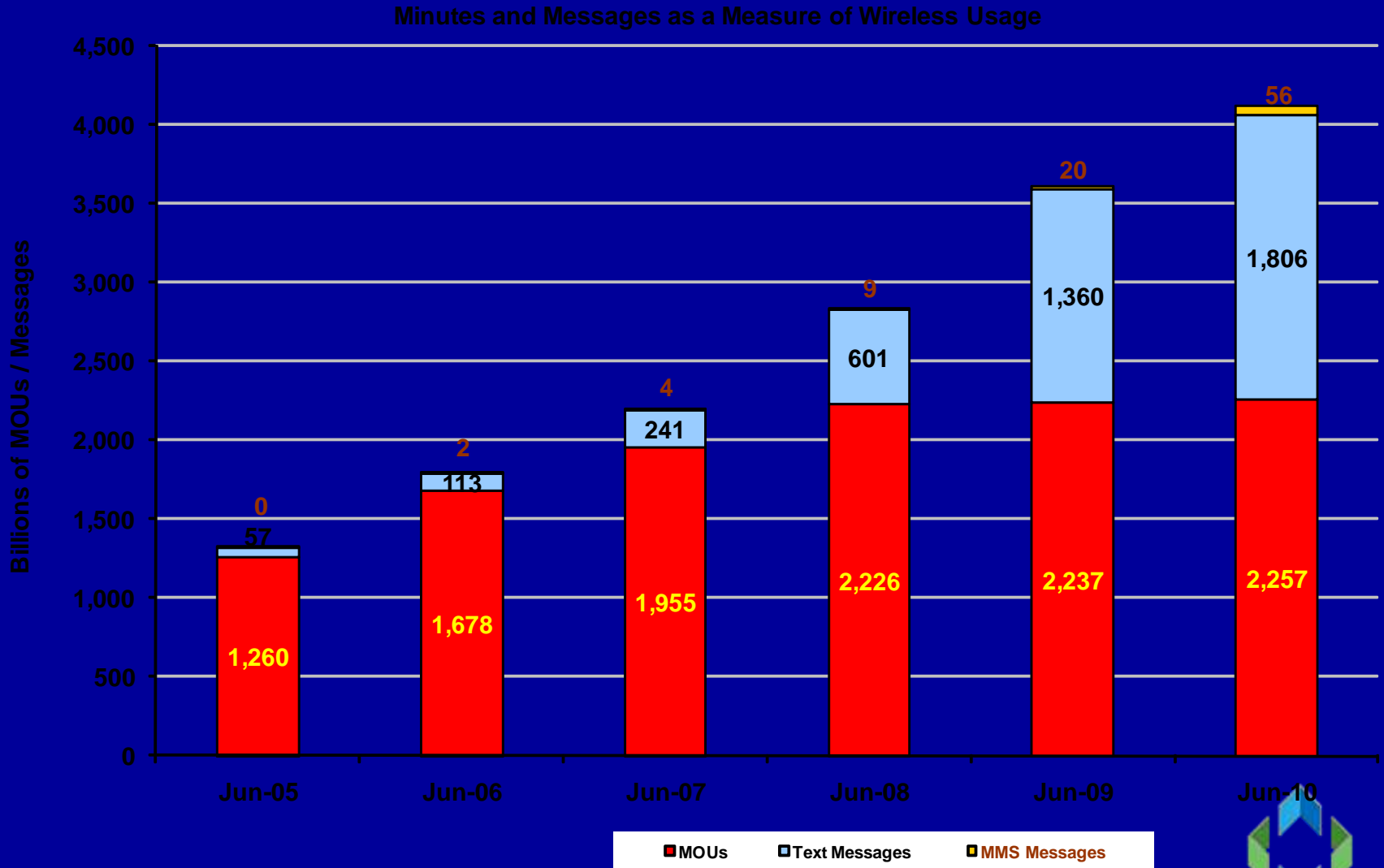
\*Source: Cisco, VNI Mobile, 2010



## The U.S. Leads in Wireless Voice Service (Average Monthly Minutes of Use, YE2009)



# 12 Month Measures of Wireless Usage: July thru June, 2005 - 2010

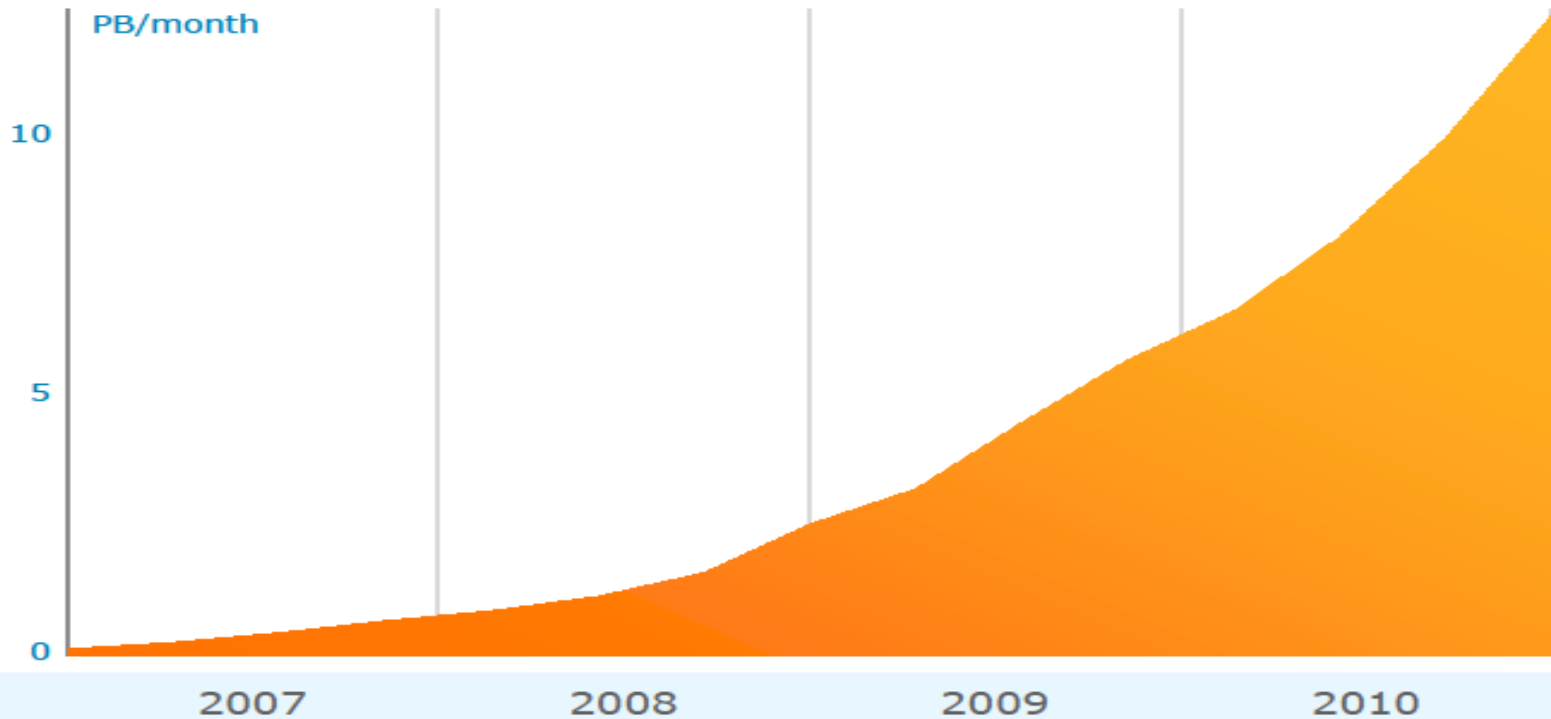


Source: CTIA Semi-Annual Wireless Survey



# Mobile Data on the AT&T Network

AT&T Mobile Data Volumes Up 8,000%  
Over Four Years

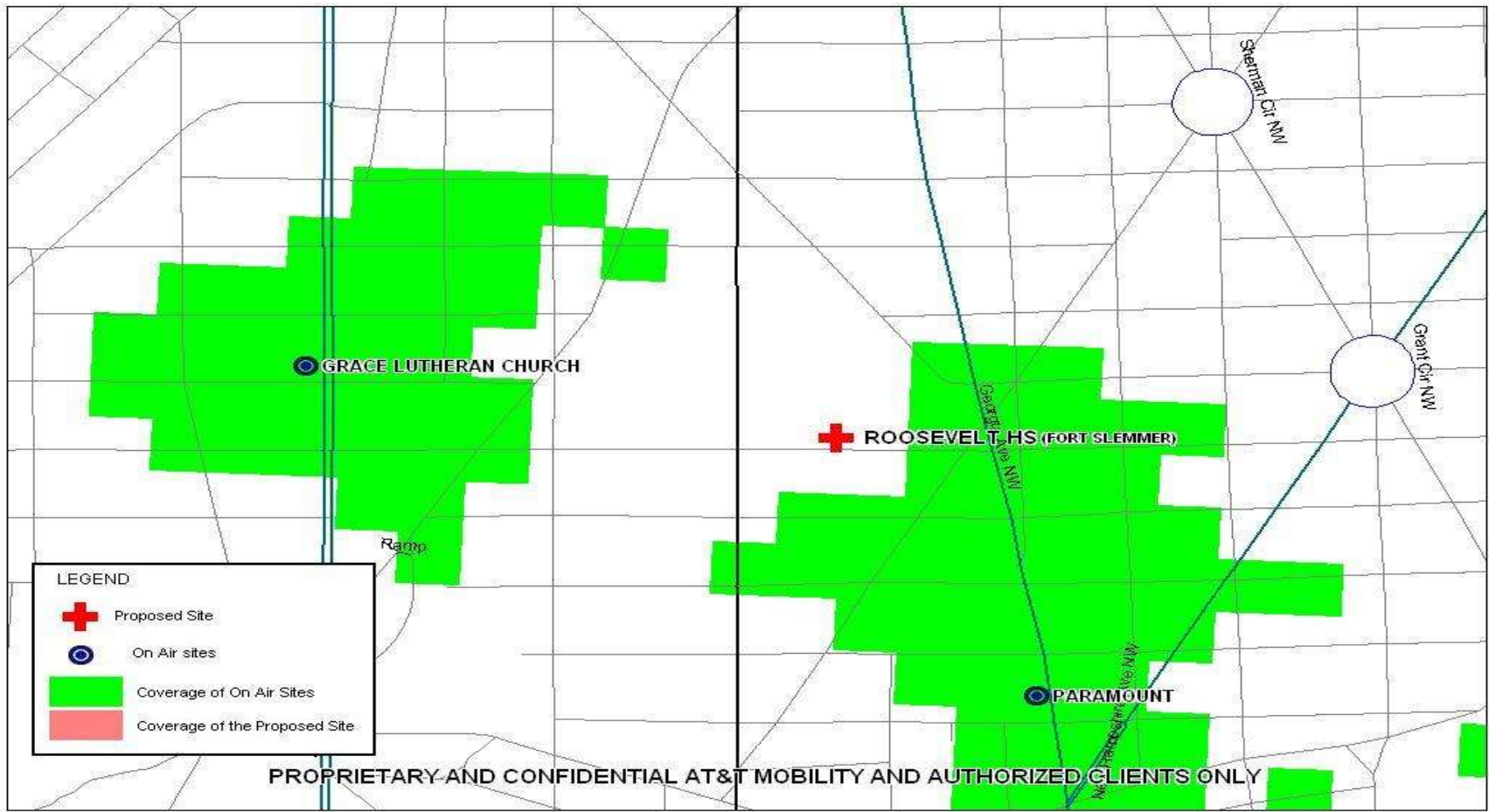


Amended 03.23.11



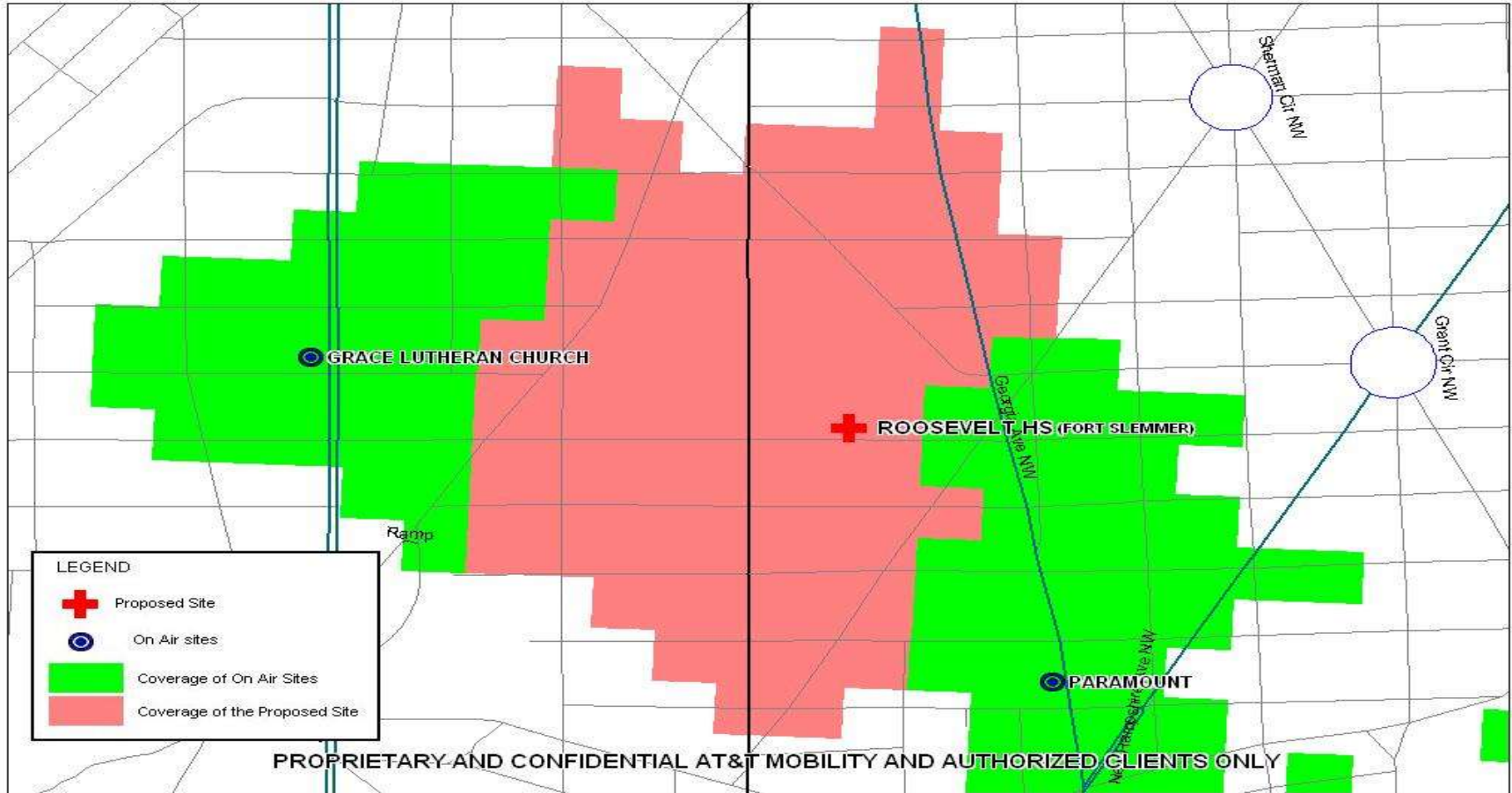
# Existing Coverage

AT&T MOBILITY EXISTING COVERAGE

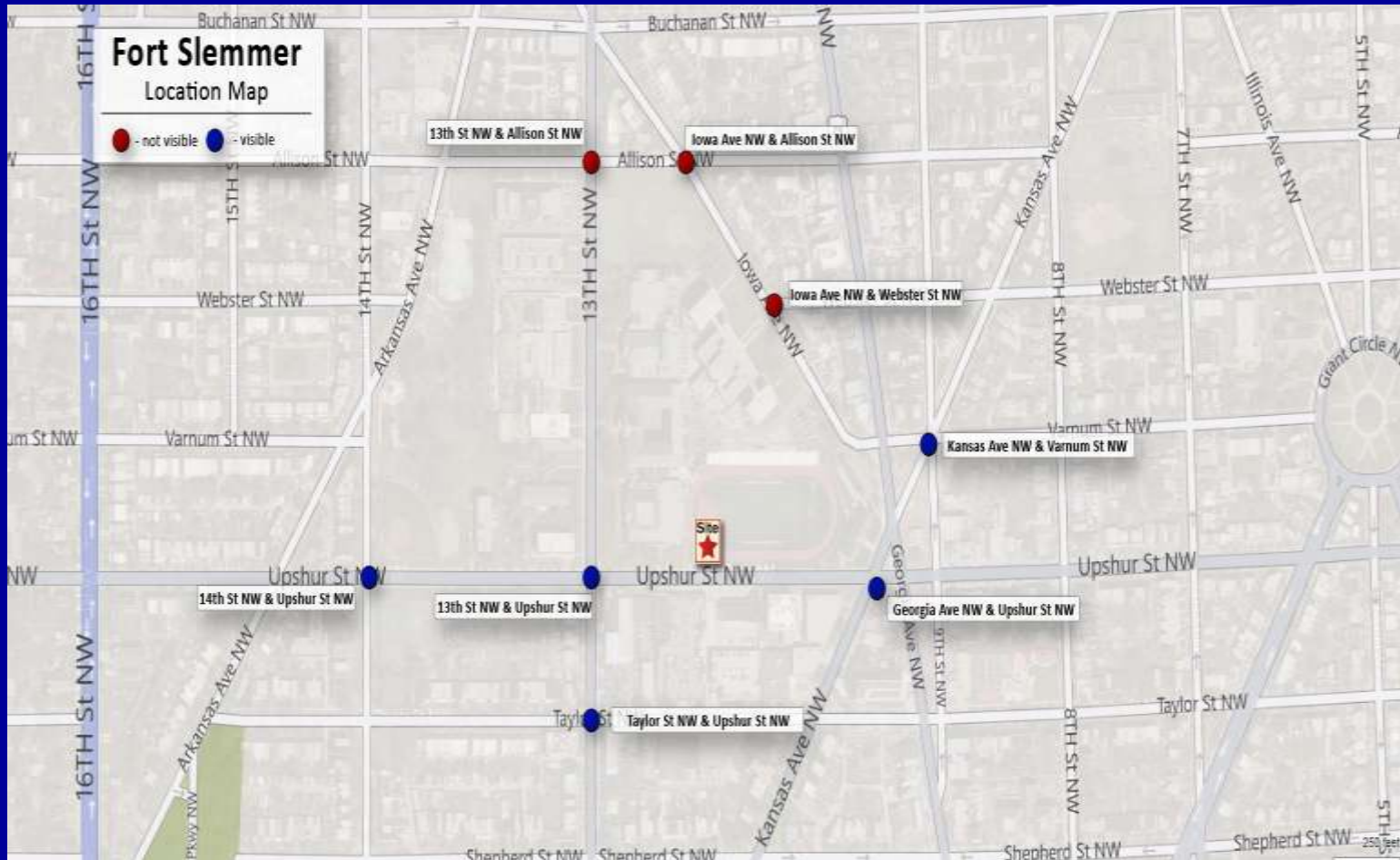


# Improved AT&T Coverage with Proposed Site

AT&T MOBILITY EXISTING COVERAGE WITH FORT SLEMMER @ 120FT  
(Location and height will meet our coverage objectives)



# Location Map for Photosims

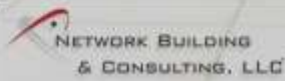


# View of Balloon from 14<sup>th</sup> & Upshur



**Site Name: Roosevelt High School**  
Wireless Communication Facility  
4301 13th Street N.W.  
Washington, D.C. 20011

**Photograph Information:**  
14th St NW & Upshur St NW  
View from the West  
**Showing the Balloon Fly**

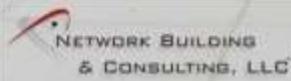


# View of Lightpole from 14<sup>th</sup> & Upshur



**Site Name: Fort Slemmer**  
Wireless Communication Facility  
4301 13th Street N.W.  
Washington, D.C. 20011

*Photograph Information:*  
14th St NW & Upshur St NW  
View from the West  
**Showing the Proposed Site**



# View of Balloon from 13<sup>th</sup> & Upshur




# View of Lightpole from 13<sup>th</sup> & Upshur



**Site Name: Roosevelt High School**  
Wireless Communication Facility  
4301 13th Street N.W.  
Washington, D.C. 20011

**Photograph Information:**  
13th St NW & Upshur St NW  
View from the West  
**Showing the Proposed Site**

 **NETWORK BUILDING  
& CONSULTING, LLC**




# View of Balloon from Kansas & Varnum



**Site Name: Roosevelt High School**  
Wireless Communication Facility  
4301 13th Street N.W.  
Washington, D.C. 20011

*Photograph Information:*  
Kansas St NW & Varnum St NW  
View from the Northeast  
**Showing the Balloon Fly**

 **NETWORK BUILDING  
& CONSULTING, LLC**




# View of Lightpole from Kansas & Varnum



Site Name: Roosevelt High School  
Wireless Communication Facility  
4301 13th Street N.W.  
Washington, D.C. 20011

Photograph Information:  
Kansas St NW & Varnum St NW  
View from the Northeast  
**Showing the Proposed Site**

 NETWORK BUILDING  
& CONSULTING, LLC



# View of Lightpole from Kansas & Varnum



# View of Balloon from 13th & Allison



Thank you.

